

# 80 JOHN ST





## SIZE

SPACE A: Approx. 1,200 SF

SPACE B: Approx. 1,650 SF

## ASKING RENT

SPACE A: Upon Request

SPACE B: Upon Request

## CROSS STREET

Between Gold St & William St

## CEILING HEIGHT

Up to 14 Feet

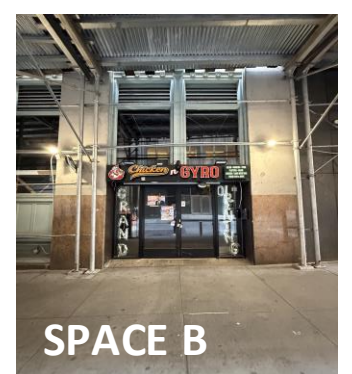
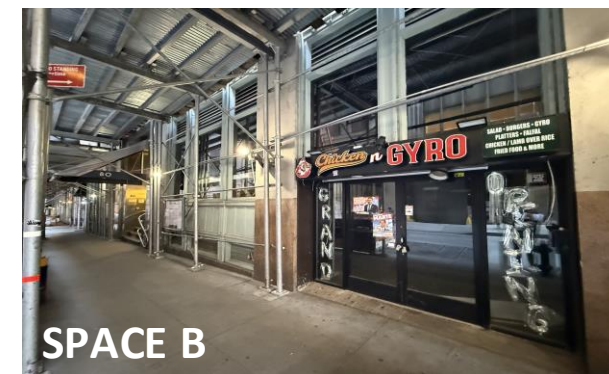
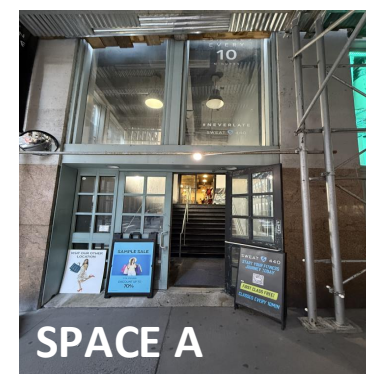
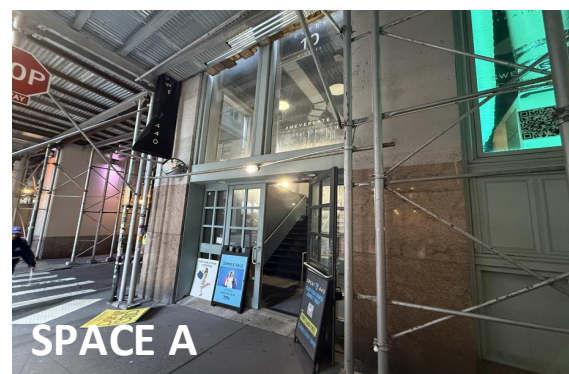
## SPECS

### SPACE A

- Corner Retail Space in Prime FiDi
- 50 Feet of Wraparound Frontage
- 14-Foot-High Ceilings
- Shared Lobby with Sweat 404
- Plenty of Natural Light
- Floor to Ceiling Windows

### SPACE B

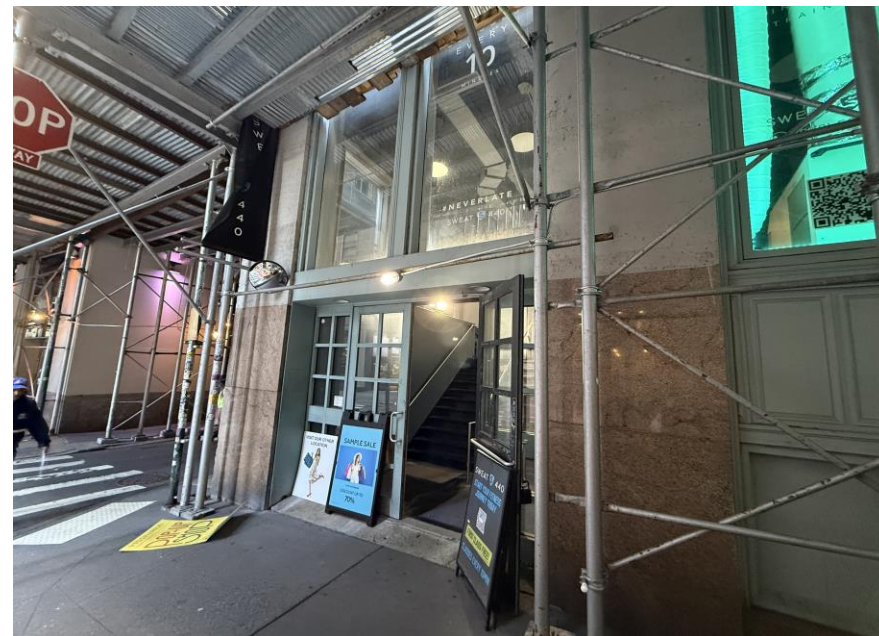
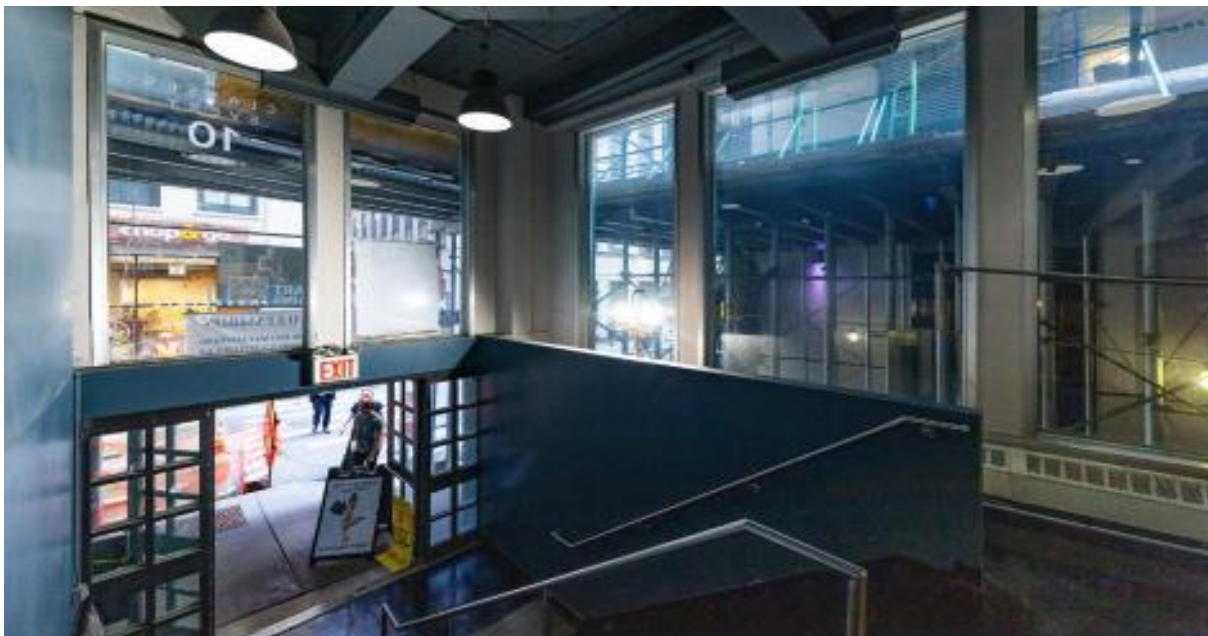
- Former Restaurant Space
- Electric Cooking OK Via Precipitator
- Kitchen Hood & Grease Trap Installed
- Private Bathroom In Place





# SPACE A PHOTOS

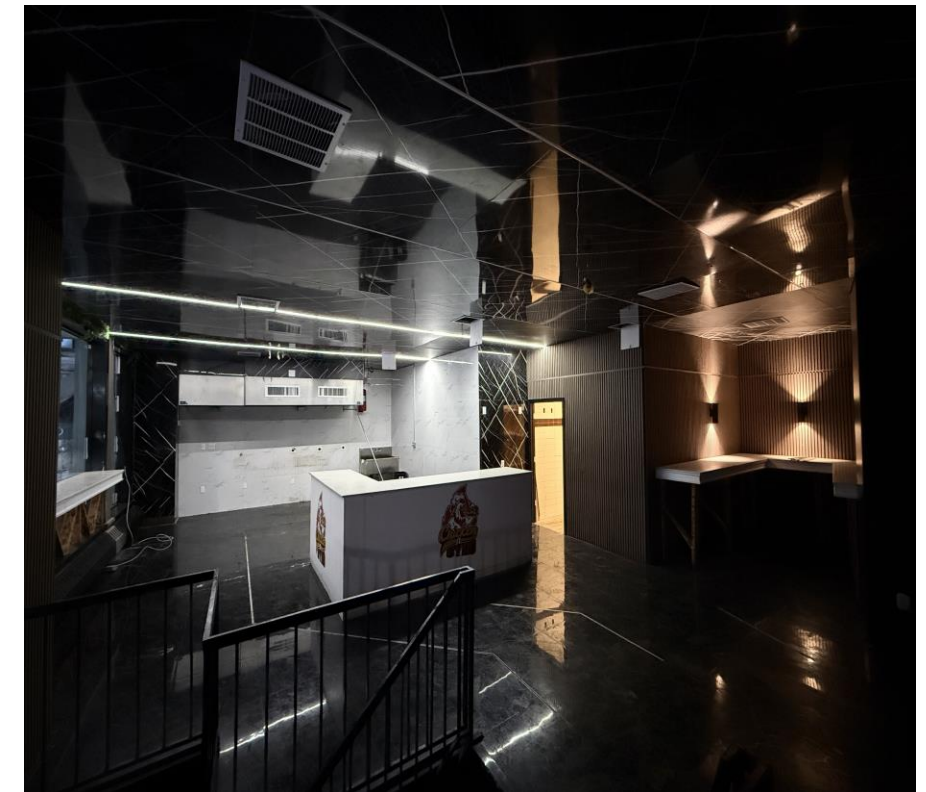
80 John Street





# SPACE B PHOTOS

80 John Street





# FLOOR PLANS

80 John Street



**FOR MORE INFORMATION,  
PLEASE CONTACT:**

**Aaron Aziz**

*Principal*

516.355.8018

aaron@aranyc.com



**224 West 35<sup>th</sup> Street; Suite 705**  
**www.aranyc.com | (646) 885-7274**

We make no guarantees or promises about the accuracy of the information provided, and we are not suggesting that it is entirely correct. Please be aware that errors and omissions can be present, and the price, rental terms, or other conditions of the property are subject to change. The property could also have been previously sold, leased, or financed, or it may be withdrawn from the market unexpectedly.