

# 654 E 12<sup>TH</sup> STREET

# DETAILS

654 East 12<sup>th</sup> St

## SIZE

400 SF Ground Floor

## ASKING RENT

Upon Request

## CROSS STREET

Between Ave B & Ave C

## SPECS

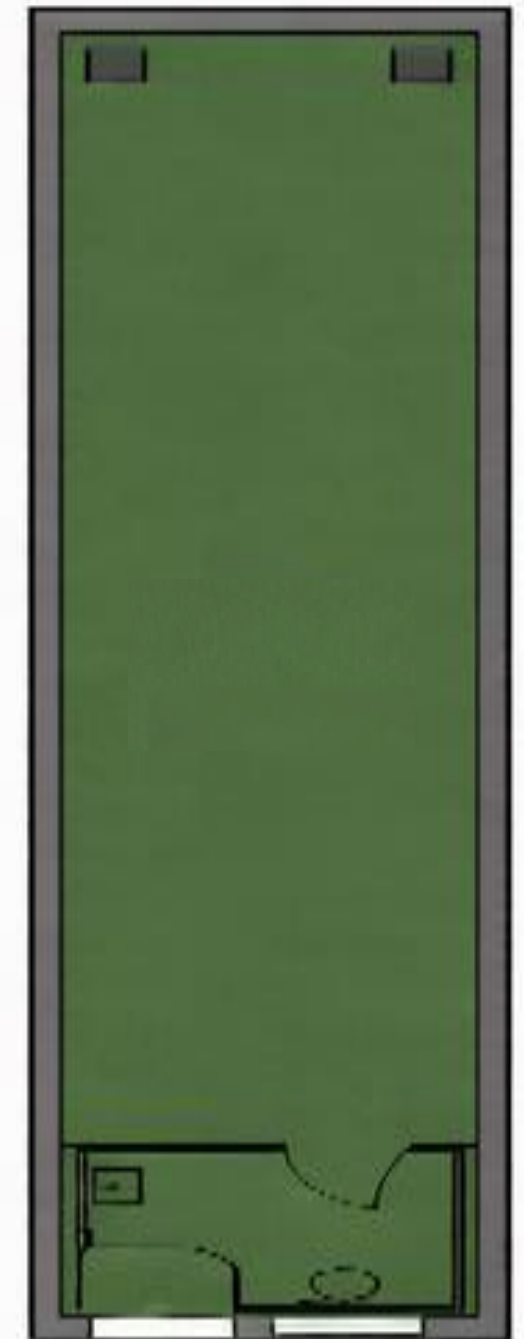
- Prime Alphabet City
- Steps from Stuytown
- All Uses Considered

## NEIGHBORS

- Tompkins Square Bagels
- East Village Pharmacy
- CTown Supermarket
- Key Food Supermarket
- Dunkin' • McDonald's
- Starbucks • CVS Pharmacy
- Walgreens • Chase Bank
- TD Bank • B Cup Café
- Book Club Bar • The Wayland
- Niagara Bar • Van Leeuwen



## FLOOR PLAN



## NEARBY TRANSIT



L Train (1st Ave)

M14D-SBS

M8

M9

10 FT - East 12th St

FOR MORE INFORMATION,  
PLEASE CONTACT:

**Marc Joseph**

*Senior Associate*  
347.569.2267  
marc@aranyc.com

**Aaron Aziz**

*Principal*  
516.355.8018  
aaron@aranyc.com



**ARA**

**224 West 35<sup>th</sup> Street; Suite 705**  
**www.aranyc.com | (646) 885-7274**

We make no guarantees or promises about the accuracy of the information provided, and we are not suggesting that it is entirely correct. Please be aware that errors and omissions can be present, and the price, rental terms, or other conditions of the property are subject to change. The property could also have been previously sold, leased, or financed, or it may be withdrawn from the market unexpectedly.